



Random-on-Random VIEW VR 635

RANDOM-ON-RANDOM VIBRATION CONTROL SOFTWARE

Easy test entry

Frequency/amplitude breakpoints of the background random acceleration spectrum are entered in an easy to read tabular form using either frequency and amplitude breakpoints or by entering one endpoint and the desired dB/octave slope. Up to 200 separate frequency/amplitude breakpoints can be entered, allowing entry of virtually any test.

Random "Tones"

From 1 to 10 narrow spectral bands can be superimposed on the background random spectrum, and swept back-and-forth between frequencies at a user-programmable rate. The amplitude, bandwidth and frequency sweep parameters are all user programmable.

Lines

The controller comes standard with user-selectable 100 to 14,000 lines of control to provide you with the frequency resolution required for your test.

Control channels

The control signal can be configured to be an average or extremal combination of 1 to 16 input channels.

Test scheduling

Tests can be scheduled to run a user-defined length of time, the spectrum level can be scaled by a specified dB-level, percentage or scaled for a specified RMS acceleration. Level schedules can be entered to run various durations at different acceleration levels.

Configurable safety limits

To protect your test article and shaker system, configurable acceleration limits, line limits and drive limits can be set by the user. The control input is also verified against shaker acceleration and displacement limits.

Data Storage

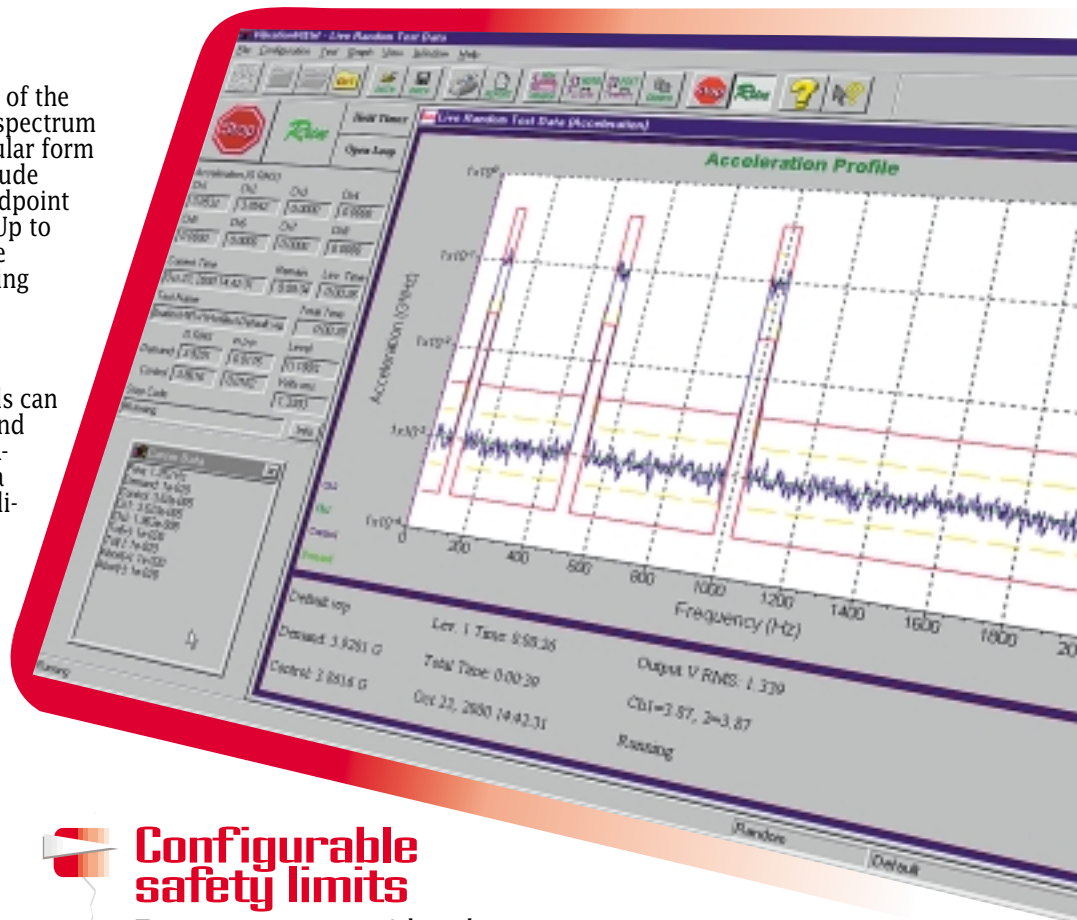
All of the test data can be stored to the disk for later retrieval. Data storage can be done manually, or programmed to automatically save at user-defined intervals.

Reference Output

The second output channel supplies an inverted copy of the main output channel.

Data plots

Many graphical display options are available, including acceleration spectral density, output voltage spectral density and channel-to-channel transmissibility. Graphs can be easily auto-scaled or zoomed, and cursors displayed. Data and text annotations can be easily placed on the graphs, with data values updated live as the data changes.



VIBRATION
RESEARCH
CORPORATION

2385 Wilshire Dr. Suite A
Jenison, MI 49428 USA
PH (616) 669-3028
FAX (616) 669-5337
www.vibrationresearch.com