



Sine-on-Random VIEW VR 630

SINE-ON-RANDOM VIBRATION CONTROL SOFTWARE

Easy test entry

Frequency/amplitude breakpoints of the background random acceleration spectrum are entered in an easy to read tabular form using either frequency and amplitude breakpoints, or by entering one endpoint and the desired dB/octave slope. Up to 1000 separate frequency/amplitude breakpoints can be entered, allowing entry of virtually any test.

Sine "Tones"

From 1 to 10 true floating-point precision sine tones can be superimposed on the background random spectrum and swept back-and-forth between frequencies at a user-programmable rate. The amplitude and frequency sweep parameters are all user programmable.

Lines

The controller comes standard with 400 lines of control to provide you with the frequency resolution required for your test.

Control channels

The control signal can be a single input channel or configured as average or extremal combination of from 2 to 16 input channels.

Test scheduling

Tests can be scheduled to run a user-defined length of time, the spectrum level can be scaled by a specified dB-level, percentage or scaled for a specified RMS acceleration. Level schedules can be entered to run various durations at different acceleration levels.

Configurable safety limits

To protect your test article and shaker system, configurable acceleration limits, line limits and drive limits can be set by the user. The control input is also verified against shaker acceleration limits.

Data Storage

All of the test data can be stored to the disk for later retrieval. Data storage can be done manually or programmed to automatically save at user-defined intervals.

Reference Output

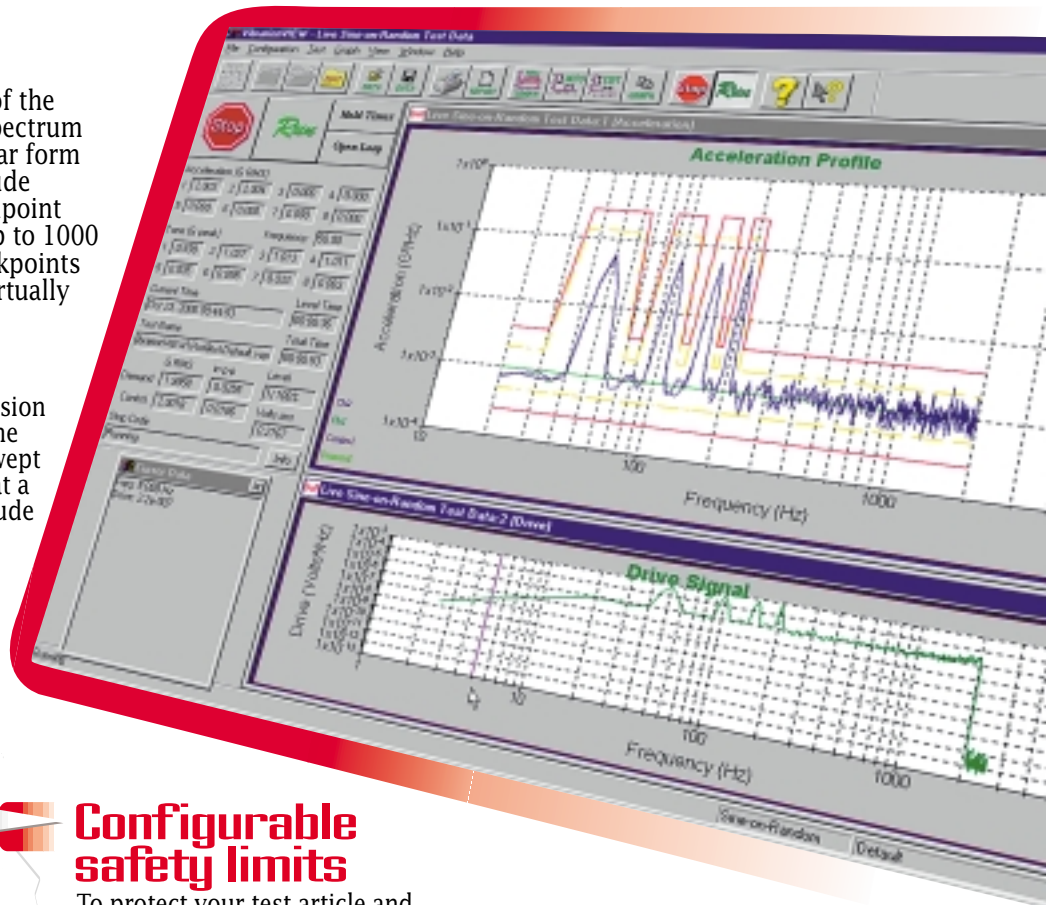
The second output channel supplies an inverted copy of the main output channel.

Data plots

Many graphical display options are available, including acceleration spectral density, output voltage spectral density and channel-to-channel transmissibility. Graphs can be easily auto-scaled or zoomed and cursors displayed. Data and text annotations can be easily placed on the graphs, with data values updated live as the data changes.

Random Import (Optional) VR 617

Import analog or digital time data to automatically generate a profile. Imports PSD data, too.



VIBRATION
RESEARCH
CORPORATION

2385 Wilshire Dr. Suite A
Jenison, MI 49428 USA
PH (616) 669-3028
FAX (616) 669-5337
www.vibrationresearch.com