



Recorder VIEW VR 658

WAVEFORM RECORDER SOFTWARE

Record Your Waveform

Record your field acceleration measurements digitally directly to your PC's hard drive. No need to buy expensive extra equipment to collect your data. The VR8500 controller hardware connects easily to a notebook computer to make a portable data acquisition system. Plus, you get all of the benefits of the features of the VR8500, including low noise, 24-bit resolution inputs, built in accelerometer constant current supply, TEDS transducer interface, and a unique DC offset that allows measurement to true DC with constant current type accelerometers.

Long Waveforms

Collect waveforms up to 4 billion samples per channel. Waveforms can be over 22 hours long at a 52 kHz sampling rate, over 100 hours long at a 10 kHz sampling rate, and over 1 year long at a 100 Hz sampling rate.

Simultaneous Control and Collection

VR8500 can be used simultaneously as both a vibration controller and a data recorder. Input channels used for control or monitoring can be recorded to the hard drive while the controller is running a test. Store the complete waveform time history of your test for later analysis. No need to buy an additional data recorder to monitor your unit under test.

Data Plots

Many graphical display options are available, including all of the graphs available with the standard VR8500 control software packages.

Complete Integration with Field Data Replication

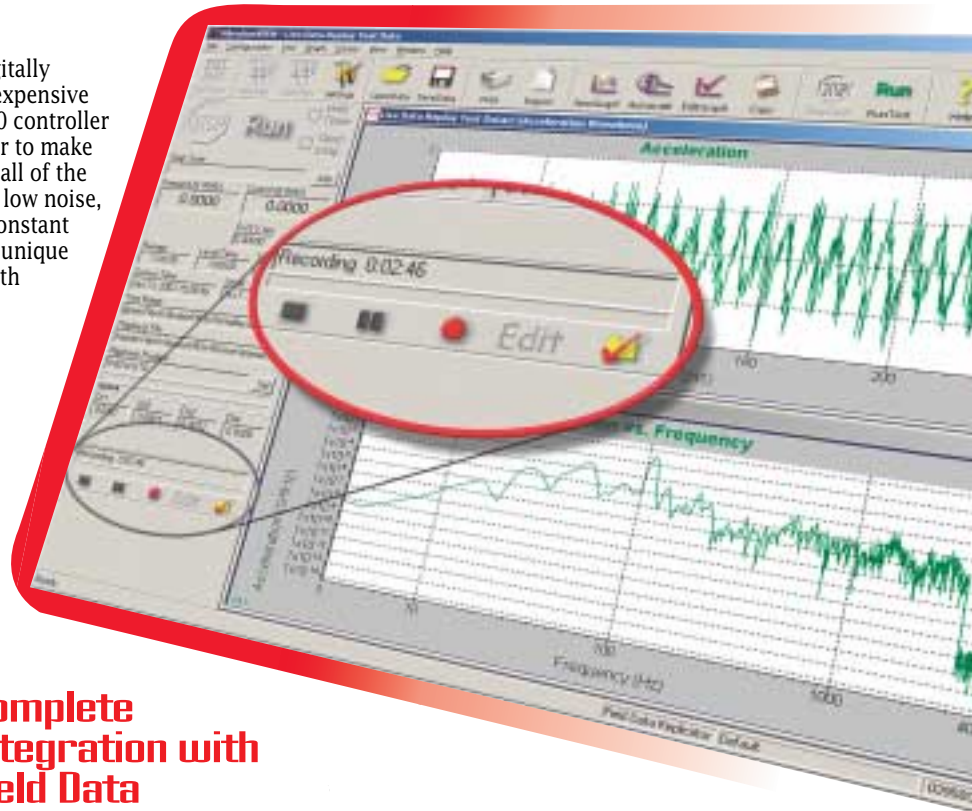
Use the test wizard in the (OPTIONAL) VR625 Field Data Replication software to proceed directly from field measurements to a test reproducing these measurements in your lab. No additional calibration or translation steps are required. Simply record the data and immediately run it on your shaker in your test lab.

Integration with Random

Collect your field acceleration measurements, and automatically convert the time waveforms into a random spectrum using the (OPTIONAL) VR650 Random Import function.

Remote Start and Stop

Use the (OPTIONAL) VR655 Wired Remote or (OPTIONAL) VR656 Wireless Remote options to trigger waveform recordings based on an external event, a simple toggle switch, or with a wireless remote control.



VIBRATION RESEARCH CORPORATION

2385 Wilshire Dr. Suite A
Jenison, MI 49428 USA
PH (616) 669-3028
FAX (616) 669-5337
E-mail: sales@vibrationresearch.com
Web: www.vibrationresearch.com



RECORDER VIEW

8500 TECHNICAL SPECIFICATIONS

The VRC data record and analysis function, VR658, will turn the 8500 controller into a digital recorder, with up to 4 channels of parallel digital recording. The Waveform Recorder allows data collection while running tests, or recording of field acceleration measurements. You can connect accelerometers, microphones, or other inputs from pressure transducers, strain gauges, etc. to the inputs.

Waveform Recorder integrates directly with Field Data Replication to allow you to easily move data directly from the field to your test lab.

It is very quick and easy to use. Simply select the desired sample rate (up to 52 kHz), then click the record button and the data starts streaming to the disk. View the signal as it streams to disk using the standard oscilloscope and spectrum analyzer displays in the VibrationVIEW software.

The Waveform Recorder software option also comes with a powerful wave editor, so you can post process the recorded data, finding the peaks, min and max, and spectrum of any section of the wave. Also use it to edit the file to remove quiet sections, or to extract transient events. Also, you can easily convert among the VibrationVIEW waveform format, the standard Windows .wav format, and portable .txt ASCII files.

The system can easily be made portable by using a battery operated power supply.

DYNAMIC PERFORMANCE

Frequency range: DC to 20,000 Hz.

Sample Rate: 100 Hz to 52 kHz.

Dynamic Range: 100 dB typical.

Signal-to-noise ratio: >100 dB (from DC to 1,000 Hz measured with half-full-scale sine wave).

Interchannel Isolation: >110 dB.

INPUT FEATURES

Channels: 1 to 4 simultaneous channels.

Voltage Range: +/- 10 Volts peak.

Resolution: 24-bits.

Sensor power: Constant current supply (4 mA) standard, can be enabled or disabled as needed.

TEDS interface: Standard.

Coupling: AC or DC coupling, with a unique DC offset that allows measurements to true DC with current type accelerometers.

Sensitivity: User selectable mV/G accelerometer sensitivity, or use any input unit when combined with the Alternate Units option (VR628).

Each channel can be enabled, disabled, and configured individually.

OUTPUT FORMAT

Data format: Binary file format, data samples stored with 32-bit floating point numbers.

Maximum Samples: 4 billion per channel.

Import formats: Convert from Windows .wav files, ASCII text (.txt) files, and Universal File Format (.uff) files.

Export formats: Convert to Windows .wav files or ASCII text (.txt) files.

VIBRATION RESEARCH CORPORATION

2385 Wilshire Dr. Suite A
Jenison, MI 49428 USA

PH (616) 669-3028

FAX (616) 669-5337

E-mail: sales@vibrationresearch.com

Web: www.vibrationresearch.com

8500