

PULSE REFLEX™

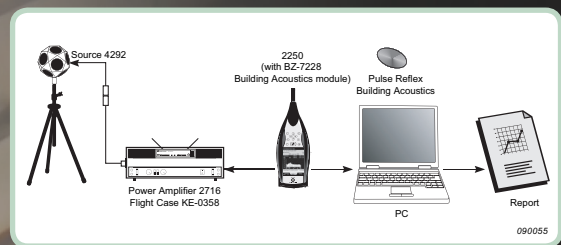
The Product of Intuition

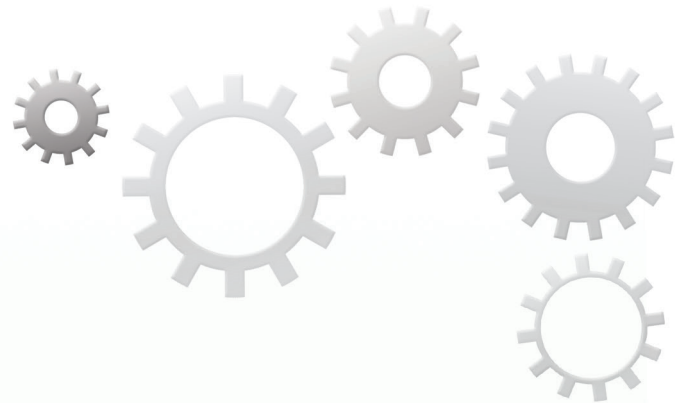
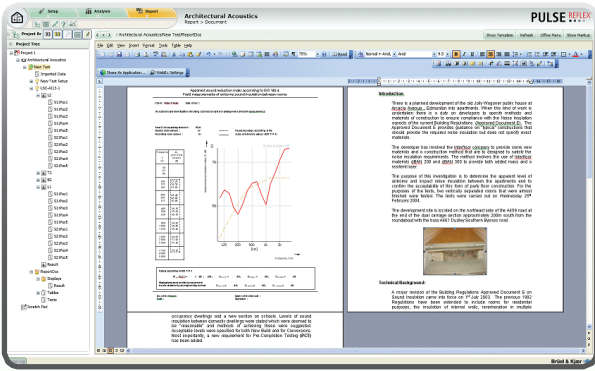
The screenshot displays the PULSE Reflex software interface for 'Architectural Acoustics'. The main window shows two frequency response graphs. The left graph is for 'L1' and the right for 'L2'. Both show a peak at 630 Hz. A 'Cursor values' box indicates: Frequency: 630.000 Hz, Result: 58.000, Reference: 58.000. Below the graphs is a 'Data Editor' table with columns for Frequency [Hz] and Result dB.

	100	125	160	200	250	315	400	500	630	800	1000	1250	1600	2000	2500	3150
Result	51.40	54.80	53.20	47.70	45.10	49.10	54.60	57.70	58.60	52.70	48.60	52.70	63.30	69.80	75.50	77.60
L1	71.74	78.66	86.28	91.04	92.84	92.58	92.25	92.88	93.13	93.10	92.85	93.22	92.74	94.10	94.24	93.94
L2	17.48	20.63	30.10	39.58	45.21	41.63	35.32	32.31	32.23	38.18	41.71	33.52	27.27	22.80	11.16	12.08
B2	9.39	12.68	14.23	24.27	31.75	28.79	22.03	26.57	19.78	28.50	28.17	24.74	18.87	11.81	12.15	1.91
Pos 01	3.04	1.75	11.74	24.01	35.18	27.99	21.22	18.86	18.75	29.98	34.59	28.68	24.13	15.62	6.16	6.46
Pos 02	0.66	7.86	15.96	23.74	30.32	29.74	21.21	18.88	18.34	28.59	34.01	24.58	20.12	15.62	6.16	6.46
Pos 03	5.53	8.73	15.86	23.74	30.32	29.74	21.21	18.88	18.34	28.59	34.01	24.58	20.12	15.62	6.16	6.46
Pos 04	14.46	17.71	11.12	16.68	23.88	25.15	15.11	13.12	15.36	27.80	24.95	23.95	19.55	9.80	5.80	5.37
T2	0.63	0.57	0.61	0.50	0.67	0.78	0.70	0.63	0.70	0.72	0.70	0.78	0.89	0.71	0.79	0.77

PULSE Reflex Building Acoustics

PULSE Reflex Building Acoustics is the companion PC software for the Type 2250 and 2270 building acoustics measurement systems. Offering an intuitive environment for measurement analysis and report generation, PULSE Reflex manages your building acoustics assessments in an easy and productive way.



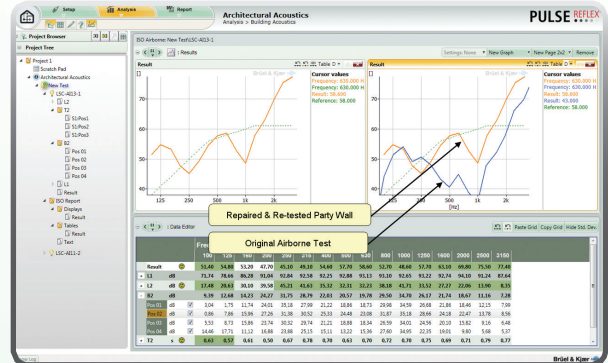


Store, analyse, report – quickly



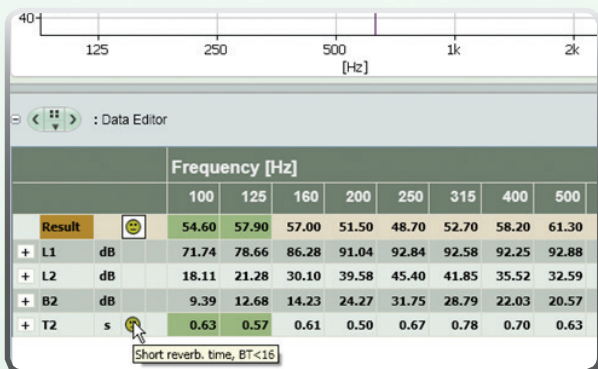
- ▶ The PULSE Reflex concept applied to our building acoustics solution enables you to review, compare, analyse and report your field and laboratory sound insulation results faster. Reports are published in a Word* document, Excel* spreadsheet or a PowerPoint* presentation, each of which operate within the PULSE Reflex environment, updating measurement reports dynamically during the analysis process.

* Word, Excel and PowerPoint are registered trademarks of the Microsoft Corporation.



Data Integrity checks – increased confidence in your results

- ▶ PULSE Reflex performs sound insulation data integrity checks that let you know if room measurement quality is below the minimum standard required by the relevant building acoustics regulations. A red smiley denotes a poor quality measurement and a yellow smiley indicates where attention may be required to ensure the best data available is used in the calculation.



Combine, compare, conclude

- ▶ Determining the before-and-after performance of a rebuilt or repaired party wall is intuitively simple. Combine, compare and conclude Sound Insulation results with confidence and ease.

Gain an unrivalled insight into the factors influencing your building acoustic results

- ▶ Edit measurement data, both graphically and numerically, in the interactive display to instantly reveal which factors are contributing most to your sound insulation results.

PULSE Reflex speaks your language – and your client's.

- ▶ Available in 8 languages, PULSE Reflex Building Acoustics can generate reports complying with the latest national and international legislation, thereby meeting local requirements and enhancing local understanding.

Ordering Information

Type 8780

PULSE Reflex Building Acoustics – PC software for analysis and reporting of results

Type 8780-UPG

PULSE Reflex Building Acoustics – upgrade from Qualifier Type 7830

M1-8780

PULSE Reflex Building Acoustics – Maintenance and Support Agreement

www.bksv.com/pulsereflex

