

# A SMART CHANGE FOR YOUR ENTIRE ORGANIZATION

## ✓ SMART FOR MANAGERS

- Increased memory capacity, greater productivity
- Increased efficiency and shorter time from concept to production
- Improves cooperation between test and simulation teams
- Continuous development and new applications

## ✓ SMART FOR USERS

- Intuitive and easy to use, especially for new users
- Faster calculation and fully integrated reporting
- Reliable analysis – powerful curve fitters to cross-check results
- Increased efficiency makes it easier to meet project deadlines

## ✓ SMART FOR IT

- New, improved 64-bit platform, latest Windows OS support
- Legacy data is safe – read as native data
- Maintained to run smoothly on current and future OS
- Reliable service and support

[www.bksv.com](http://www.bksv.com)

**Brüel & Kjær Sound & Vibration Measurement A/S**  
DK-2850 Nærum · Denmark  
Telephone: +45 77 41 20 00 · Fax: +45 45 80 14 05  
[www.bksv.com](http://www.bksv.com) · [info@bksv.com](mailto:info@bksv.com)  
Local representatives and service organisations worldwide

**Brüel & Kjær**   
BEYOND MEASURE

# A smart change

FUTURE-PROOF YOUR DATA AND  
YOUR SYSTEM WITH PULSE REFLEX



BG 1843 - 11

**Brüel & Kjær**   
BEYOND MEASURE



# EASY-TO-USE SYSTEM LETS YOU WORK FASTER, MORE EFFICIENTLY

A new, improved platform from Brüel & Kjær integrates data acquisition into our existing PULSE Reflex™ system.

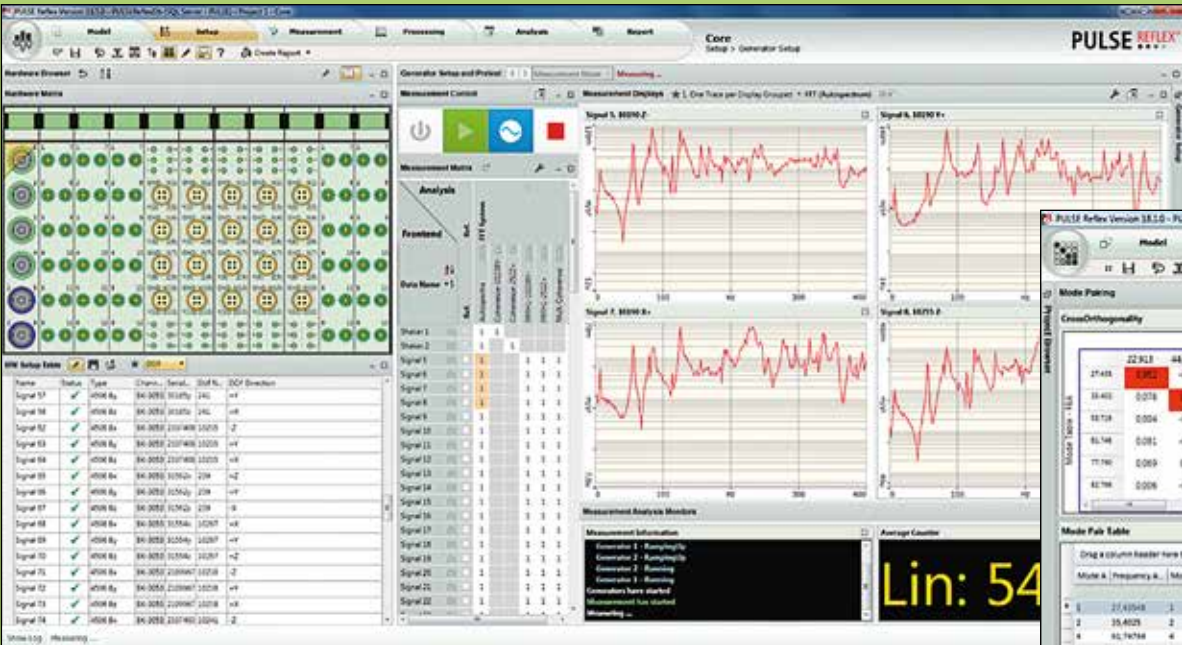


LAN-XI is a versatile system of modular units that can be combined in frames and used individually or as part of a distributed-module setup

The current Test for I-deas (TFI) platform is unsustainable in the long term as computer technology continues to evolve. PULSE Reflex offers a modern solution that both upgrades your system and protects your investment in existing hardware and legacy data. A solution that combines measurement, analysis and integration of test and Finite Element Analysis (FEA) results in the same system – and that’s easy to set up even for hundreds of channels.

**Boosts productivity**  
PULSE Reflex is intuitive, easy to learn, and easy to use – even for new users. It gives you a consistent user interface and one workflow from test to analysis and reporting. Built-in automation and batch processing make repetitive tasks easy, and the system simplifies structural analysis to deliver results you can trust.

**Protects your investment**  
Because it can be used with your existing PULSE LAN-XI, PULSE IDA® or VXI data acquisition system, PULSE Reflex protects your investment in existing hardware. The system offers an open interface with leading standard test and Finite Element (FE) formats, and because you can import both measurement and simulation data from existing TFI projects your legacy data is also protected.



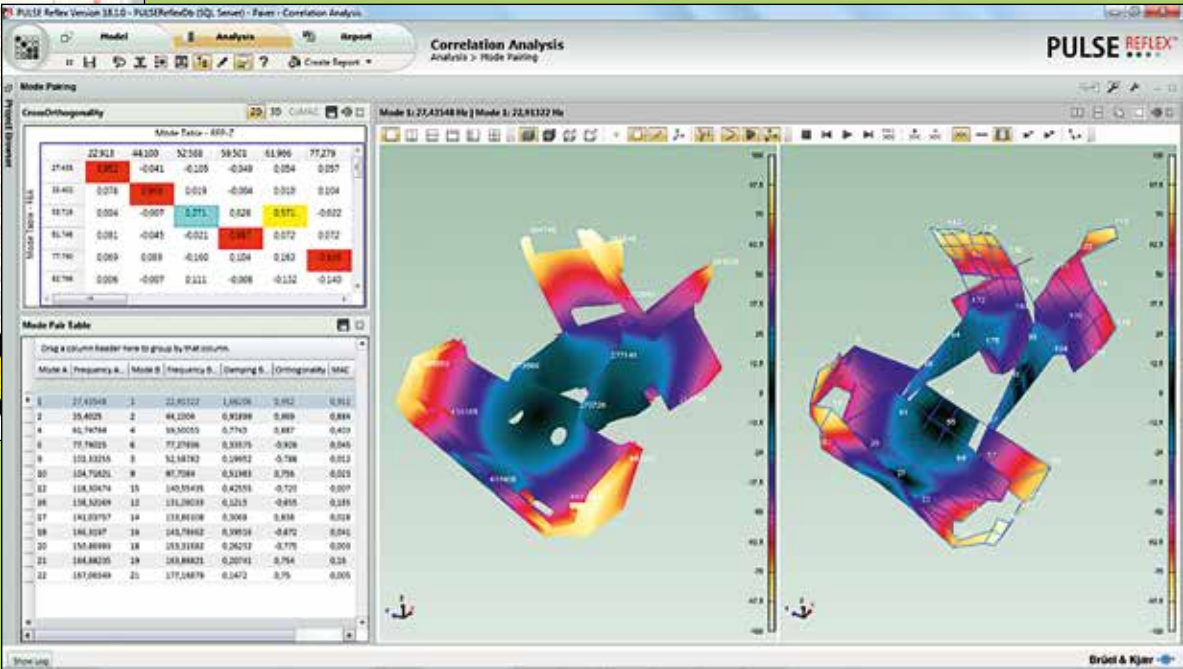
The measurement software provides a unique GUI for visualizing, setting up and controlling data acquisition hardware

64-BIT  
64 bit

Windows 8  
Windows 8

Windows 7  
Windows 7

Stay at the leading edge with support for Windows 7, 8, and 8.1 and 64-bit native applications



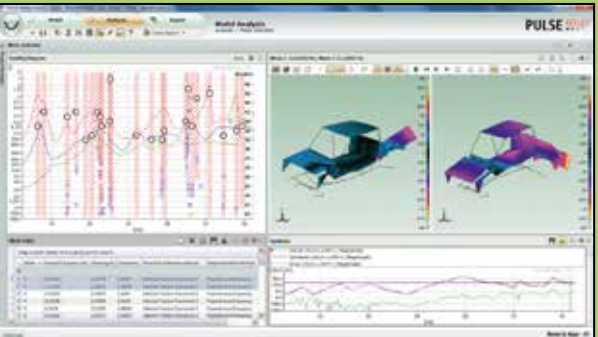
Model correlation between test and FEA results helps both test engineers and analysts improve their models

## SINGLE-PLATFORM FLEXIBILITY

LAN-XI Data Acquisition Hardware covers a range of input/output modules that can be used stand-alone, in a distributed network or in frames holding up to 11 modules. These independent front-end modules give you the flexibility to easily expand or reduce your system as necessary. LAN-XI works with both PULSE and Test for I-deas software platforms.



Boost productivity through automation and more efficient report creation using embedded Microsoft® Word, Excel® or PowerPoint®



With PULSE Reflex Modal Analysis, accurate modal parameters are quickly obtained by following an intuitive and flexible workflow process

## CUTTING-EDGE TECHNOLOGY

PULSE Reflex provides leading real-time measurements and powerful, fully integrated post-processing and reporting using Microsoft® Word, Excel® or PowerPoint®. Calculations are made quicker with 64-bit native applications, with powerful curve fitters to give you confident validation of simulation models. The latest Windows® OS support ensures you are always up to date and prepared for tomorrow’s challenges.



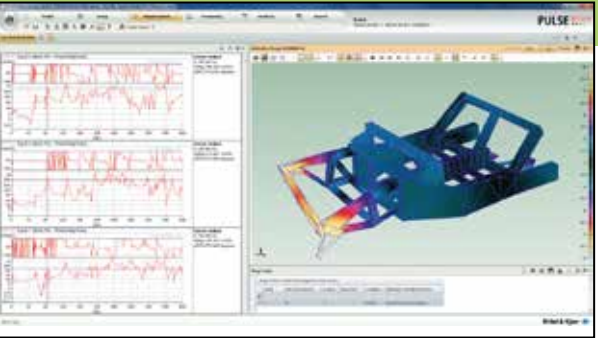
PULSE Reflex features a powerful interface to FEA results from Nastran (MSC, NX, NEI), Ansys and Abaqus or UFF files

## FUTURE SECURITY AND GROWTH

PULSE Reflex is designed for the future, with support and maintenance that includes technical support for TFI. A strong growth path with heavy investment ensures an expanding portfolio of PULSE Reflex applications, as well as continuous enhancements that are included with each new maintenance release to customers with M1 maintenance contracts.



Aerospace is just one of many industries served by PULSE Reflex technology



Strong validation tools ensure potentially bad measurements can either be re-done or excluded from the subsequent analysis