

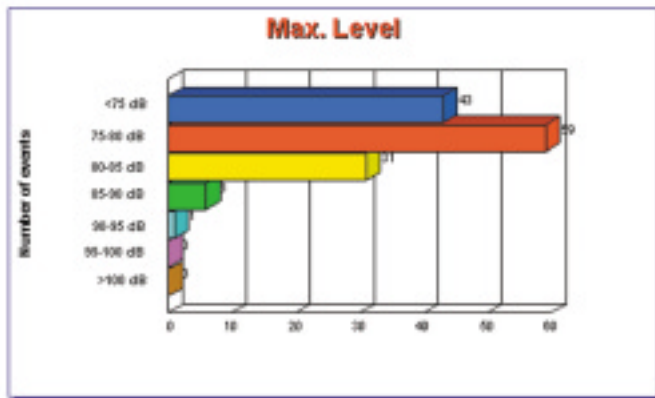
PRODUCT DATA

Reporting Module — Type 7832

Number of Events

ENZERSDORF/FISCHA

Total number of events: 140



Reporting Module Type 7832 provides dedicated Data Management and Reporting for Brüel & Kjær Noise Monitoring Systems.

It has never been easier to create great looking impressive reports! A "reporting wizard" function guides you all the way; from report selection, creating data selection criteria, through to the end result.

The Reporting Module is a Windows®-based software package for creating reports based on the stored data in the applications Noise Monitoring Software Type 7802 and Flight-data Option Type 7804.

The module can easily export reports to other applications. The reports can be attached to an e-mail or saved in html format so they can be used on the internet.

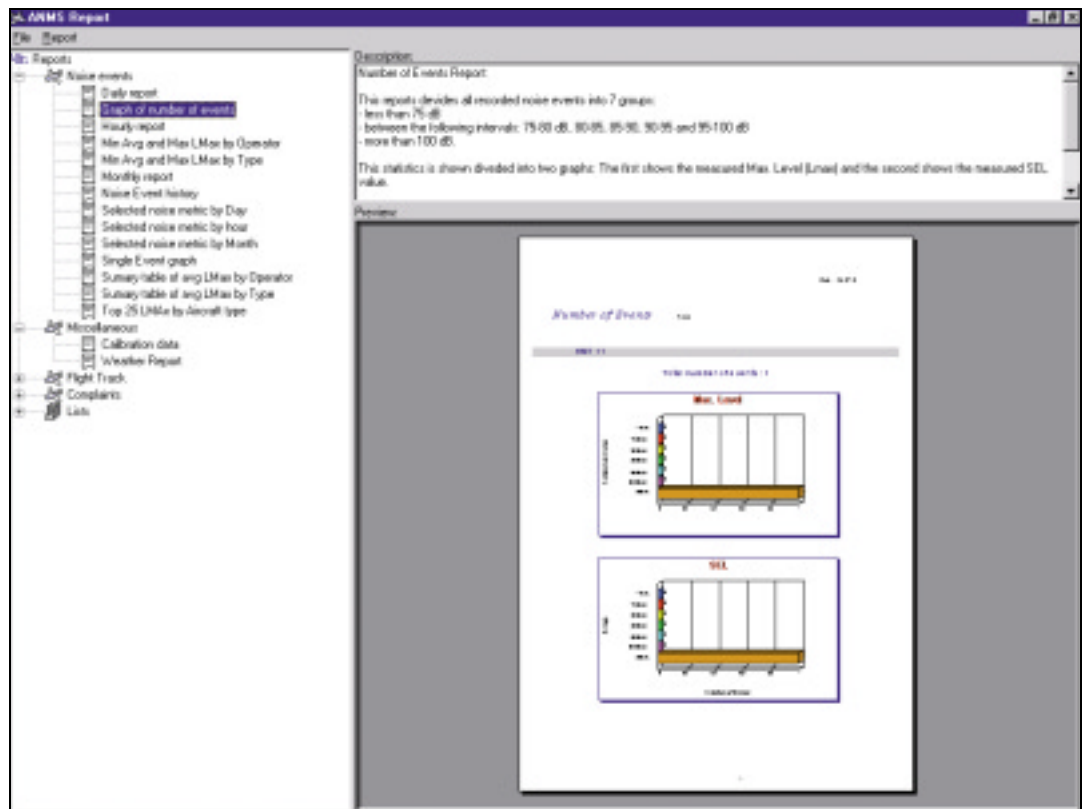
7832

- USES**
- Fast Reporting: Report Wizards guide you through each step
 - Display measurement results in graphical or tabular format
 - Generate, view and print impressive reports in colour
 - Export reports internally or externally in all well-known Microsoft® Office formats

- FEATURES**
- 32-bit software running under Windows NT®
 - Reports are based on the data collected by Noise Monitoring Software Type 7802 and Flight-data Option Type 7804
 - Reports are created in the Crystal Reports™ environment
 - Company logo can be shown on each report
 - Reports can be dragged and dropped into a list that can be printed for a chosen time period
 - Additional reports can easily be added
 - Create or modify all reports (requires Crystal Reports licence), or let Brüel & Kjær create additional customised reports for you

Report Management

Fig. 1
Report Management window. The left-hand column lists the categories of reports, the panel to the upper right gives a verbal description of the selected report and the main window displays a preview of the selected report



In the left column all available reports are listed. The reports are grouped into a number of categories. You can very easily create new categories or remove existing ones. The List category covers a number of reports which you can set up to be printed regularly.

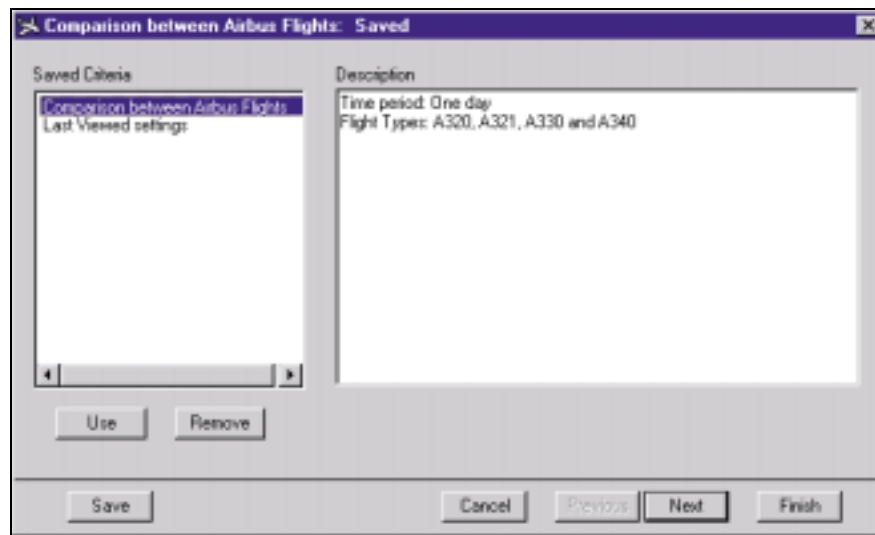
When browsing between reports in a category the chosen report appears in a preview format in the lower right of the display. The panel to the upper right gives you a description. Fig. 1 shows a preview of a Noise Event report.

The Data Selection Wizard

It is very easy to generate a report based on data stored in the Noise Monitoring System's database. Simply select one of the reports in the left column and the data selection starts. The reporting wizard is a tool which helps you, step-by-step, to create data selection criteria or to reuse one created earlier.

The first step is to decide if one of the previously saved data selection criteria should be reused. If you choose to use one of the criteria in the list (e.g., *Comparison between airbus flight* in the example below) all you have to do is to click on the Finish button.

Fig. 2
Select a previously created criterion.
The left panel shows the name of the criterion and a description is displayed on the right



The report will then be presented on the screen! (See the View Reports section below)

If no previously created criteria can be re-used, click the Next button. In the following examples a number of data selection criteria can be adjusted to find the exact data you require.

Fig. 3
An example of a dialog box showing date and time selection, and which Noise Monitoring Terminal should be included

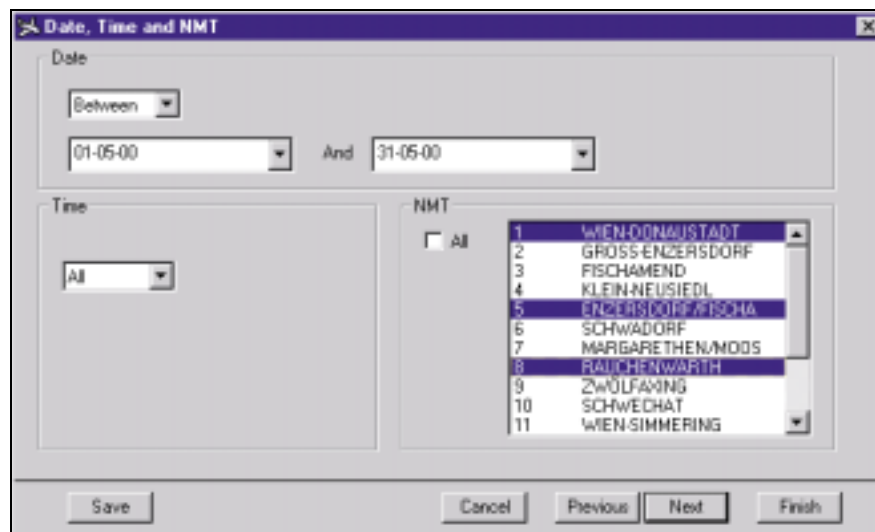
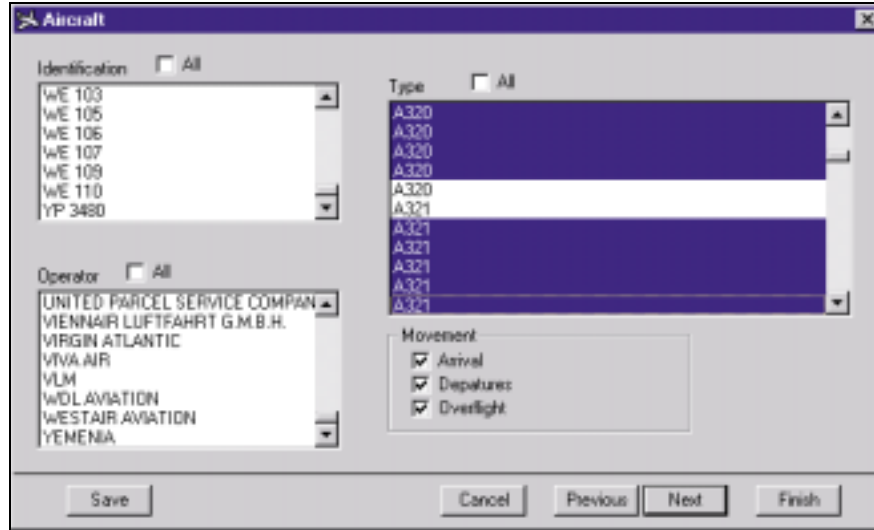


Fig. 4
 A further example
 of a dialog box.
 Choose the
 required aircraft
 related parameters



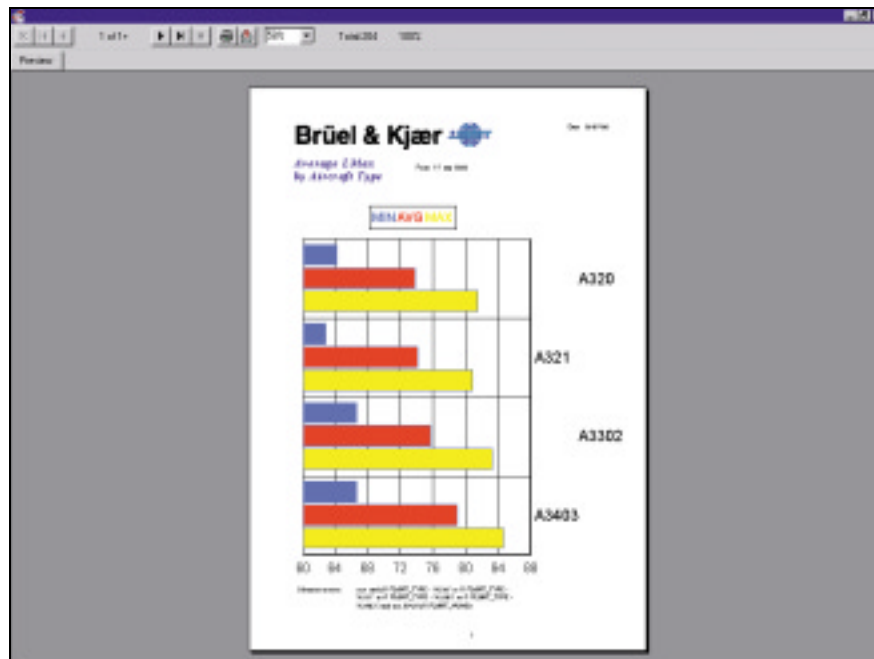
The displayed fields are tailored to match the chosen report. This means you will not find an Aircraft selection dialog box if you have chosen a “graph of noise events” (see the example in Fig.1). The selection criteria in the dialog box above are:

- Time Period (Date, Time)
- Noise Monitoring Terminal
- Aircraft Description (Identification, Type)
- Aircraft Operator
- Type of Movement

Click the Finish button to generate the requested report in the Crystal Reports™ format, as shown in Fig. 5.

View Reports

Fig. 5
 An example of a
 generated report
 including Customer
 Logo, Report Title,
 Graphical
 presentation and
 Selection
 parameters



The layout of all reports can be modified. All you require is a license for the Seagate Crystal Reports software package (www.seagate.com). This makes it possible to adjust the layout to match the design line of your company, or Brüel&Kjær can customise the layout for you.

Export Data

Reports can be exported or saved in numerous ways as described in the Specifications.

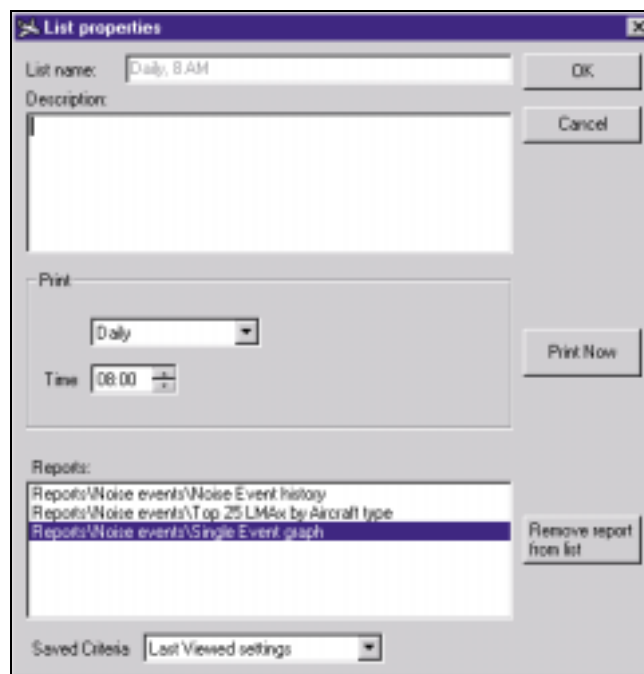
List Category

The List category can cover a number of lists. A list is defined as group a of one or more reports that a user wants to print on a regular basis.

A report can very easily be added to a list. Use the mouse to simply drag a chosen report into the created list.

All the settings for a list can be controlled from the dialog box.

Fig. 6
An example of detailed list settings. Note the Print settings in the centre of center of the dialog box



In this list the following reports will be printed at 8 AM every day:

- Noise Event History
- Top 25 L_{MAX} by Aircraft type
- Single Event graph

Specifications – Reporting Module Type 7832

Input Requirements

Data files stored in the Noise Monitoring Software Type 7802 and Flight-data Option Type 7804, (as described on the front page)

Tabular Reports Included

See attached documentation

Graphical Reports Included

See attached documentation

Report Window

Crystal Reports™, run-time environment

Output Format

Character-separated values, Comma-separated values (CSV), Crystal Reports (RPT), Data Interchange format (DIF), Excel 2.1-8.0 (XLS), HTML 3.0 - 3.2, Lotus 1-2-3 (WK1), ODBC, Paginated text, Record style, Rich Text format (RTF), Tab-separated text, Tab-separated values, Text, Word.

Output Destination

Application, Disk file, Exchange folder, Lotus Notes Database, Microsoft Mail (MAPI)

Platform

32-bit software running under Windows NT

Ordering Information

Type 7832-001: Reporting Module, English Language