

# PRODUCT DATA

## ASAM ODS Connectivity — Type 8605

ASAM ODS Connectivity Type 8605 is a solution that enables measurements from PULSE™, or any of its applications, to be exchanged with third parties using the Open Data Service (ODS) data exchange syntax and format.

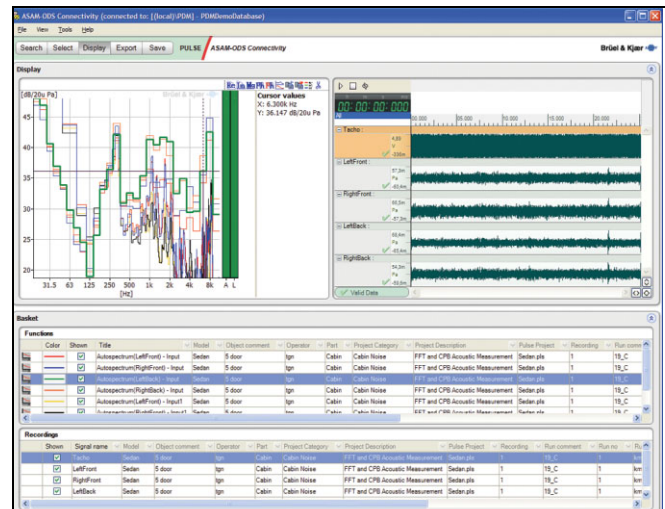
During development and production of vehicles, a large amount of data is produced in a variety of databases using a number of methods. To facilitate data sharing, data within the automotive industry can be stored in a standardised format specified by the Association for Standardisation of Automation and Measuring Systems (ASAM). The standard is called ASAM ODS.

### USES

- Search for and retrieve historic data for display, evaluation and export in ASAM ODS compatible file format
- Import measurement data from ASAM ODS compatible file format and save data in a PULSE Data Manager Type 7767 (PDM) database

### FEATURES

- Exports functions and recordings from a PDM database



- Exports functions from PULSE
- Exports functions from PULSE ASCII, UFF and XML files
- Exports recordings from PTI files
- Imports functions from ASAM ODS files
- Supports 2D and 3D functions

### Introduction

ASAM ODS Connectivity Type 8605 is a solution for exchange of measurement data between a PULSE system and third party software in a standardised form. The data exchange syntax and format is specified by the ASAM organisation in the ODS standard. ASAM ODS is that part of the ASAM standards that focuses on persistent storage and retrieval of data. The exchange format used is the ATF/XML file format.

### Searching and Retrieving PULSE Data

The Search task in Type 8605's user interface allows you to find and retrieve data stored in a database. With correctly labelled data, you can, for example, search for and retrieve all measurements made over time at a specific

measurement point on all vehicles of a specified type. Searches can be saved in a query list for quick searches in the future.

From the Result List, which shows all measurements matching your query, you can select a measurement for export and/or display by simply dragging and dropping. Recordings (PTI files) stored with the PULSE files, can also be played back or exported directly from the Type 8605 interface.

With PULSE or PULSE Data Manager open, you can drag and drop data to Type 8605, or drag PULSE function and time files stored on disk from Windows® Explorer to Type 8605.

## Exporting Data

The Export task allows you to map each meta-data field to a certain base element in the ASAM ODS model. The mapping definitions are stored in XML files, which you can load, modify and store as a new file.

## Importing Other Data Formats

You can import ASAM ODS ATF/XML files. The functions in the imported file will be added to Type 8605's interface.

## Saving Data to a Database

The Save task allows you to easily save the data in a PDM database by dragging and dropping the data. Meta-data that matches the fields in the selected database can be stored together with the measurement data.

If a database does not exist, a built-in tool will help you to create a PDM database with meta-data fields that matches the application model of an ASAM ODS ATF/XML file.

---

## Specifications – ASAM ODS Connectivity Type 8605

---

### OPERATING SYSTEM

Microsoft® Windows® XP and Windows Vista™

### EXPORT FILE FORMAT

ATF/XML file according to ASAM ODS Version 5.1 Chapter 6

### IMPORT FILE FORMAT

ATF/XML file according to ASAM ODS Version 5.1 Chapter 6

---

## Ordering Information

---

Type 8605 ASAM ODS Connectivity

### MAINTENANCE & SUPPORT AGREEMENTS

M 1-8605-X ASAM ODS Connectivity Software Maintenance & Support Agreement

## TRADEMARKS

Microsoft and Windows are registered trademarks of Microsoft Corporation in the United States and/or other countries · Windows Vista is either a registered trademark or trademark of Microsoft Corporation in the United States and/or other countries

---

Brüel & Kjær reserves the right to change specifications and accessories without notice

**HEADQUARTERS: DK-2850 Nærum · Denmark · Telephone: +45 4580 0500**  
Fax: +45 4580 1405 · www.bksv.com · info@bksv.com

Australia (+61) 2 9889-8888 · Austria (+43) 1 865 74 00 · Brazil (+55) 11 5188-8161  
Canada (+1) 514 695-8225 · China (+86) 10 680 29906 · Czech Republic (+420) 2 6702 1100  
Finland (+358) 9-755 950 · France (+33) 1 69 90 71 00 · Germany (+49) 421 17 87 0  
Hong Kong (+852) 2548 7486 · Hungary (+36) 1 215 83 05 · Ireland (+353) 1 807 4083  
Italy (+39) 0257 68061 · Japan (+81) 3 5715 1612 · Republic of Korea (+82) 2 3473 0605  
Netherlands (+31) 318 55 9290 · Norway (+47) 66 77 11 55 · Poland (+48) 22 816 75 56  
Portugal (+351) 21 4169 040 · Singapore (+65) 6377 4512 · Slovak Republic (+421) 25 443 0701  
Spain (+34) 91 659 0820 · Sweden (+46) 33 225 622 · Switzerland (+41) 44 8807 035  
Taiwan (+886) 2 2502 7255 · United Kingdom (+44) 14 38 739 000 · USA (+1) 800 332 2040

Local representatives and service organisations worldwide

**Brüel & Kjær** 

