

How to Install uEye Cameras

PULSE™ LabShop and BK Connect® array applications support the following uEye® cameras:

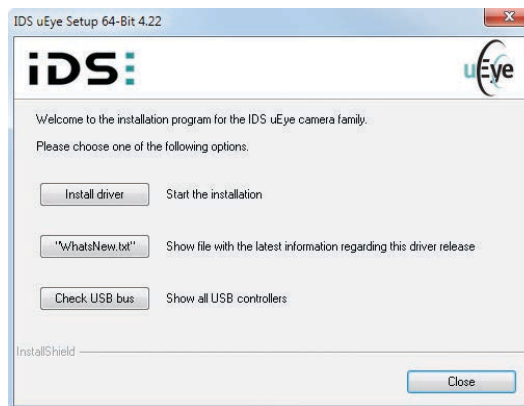
- For spherical arrays with USB connection: use **UI122xLE-C**
- For other arrays with USB connection: use **UI324xCP-C** or **UI124xLE-C**
- For sliced wheel arrays with PoE or LAN connection: use **UI524xCP-C**

The cameras use the same drivers. However, there are different drivers for 32-bit and for 64-bit operating systems and for different versions of PULSE LabShop and BK Connect:

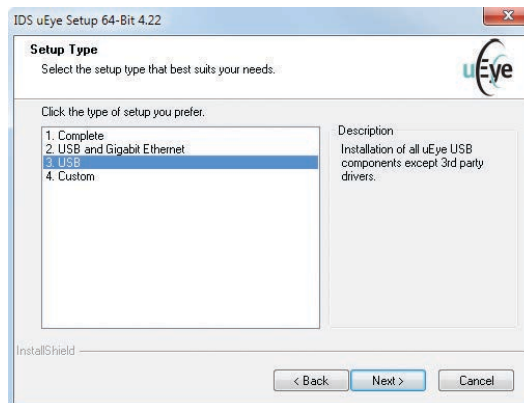
- PULSE 18 and 19 require version **4.22**
- PULSE 20 through PULSE 22 require version **4.70**
- From BK Connect 2019 and PULSE 23, the required version is **4.91**

Installation

- 1) Copy the zip file containing the drivers from the USB key supplied with the system, or from another device, to the target machine, or download the file from hbkworld.com.
- 2) Unzip the file.
- 3) Run the .exe file.
- 4) Select the setup language and click **Next >**.
- 5) Click **Install driver**.



- 6) Select:
 - For a PoE/LAN camera: **USB and Gigabit Ethernet**
 - For a USB camera: **USB**



- 7) Click **Next >** and follow the on-screen instructions until the driver is installed.

USB Camera Setup

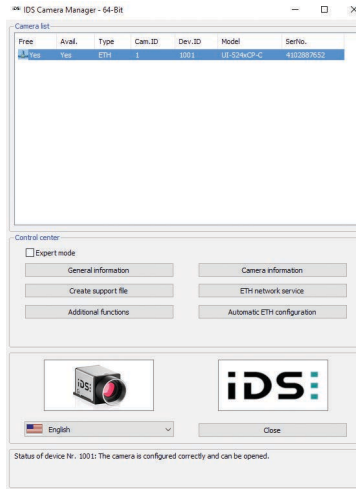
NOTE:

- The camera requires power over USB
- The camera may not work with USB-Ethernet-USB extension cables

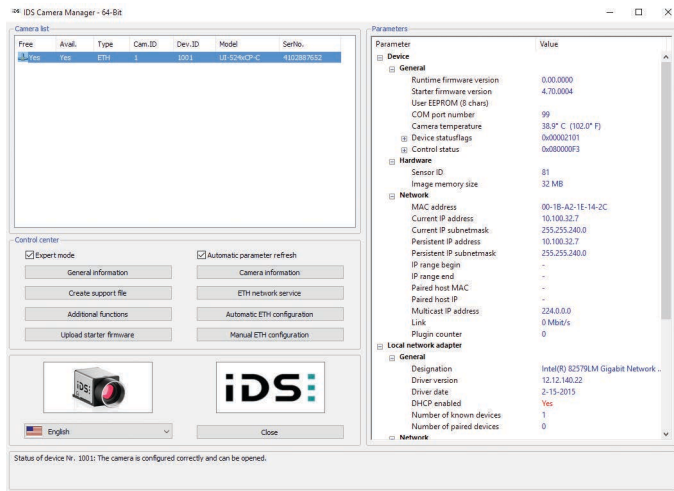
- 1) Plug in the camera and wait until the PC has recognized the device.
- 2) Start the PULSE LabShop template **Array Fixed Meas.plt** or start **BK Connect Array Analysis**.
- 3) Once the application has started, select the camera from the drop-down list in the *Camera* window.

PoE/LAN Camera Setup

1) Open **IDS Camera Manager**.



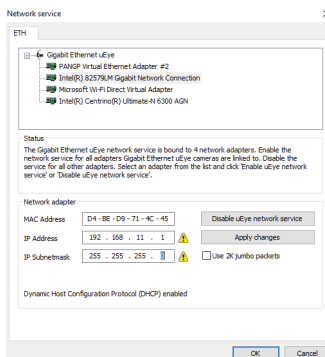
2) Check **Expert Mode**.



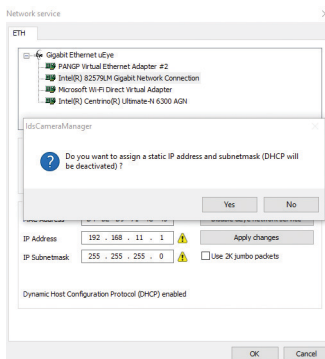
3) Open **ETH network service**.

4) Enter the following static address for the network adapter:

IP Address: **192.168.11.1**
IP Subnetmask: **255.255.255.0**

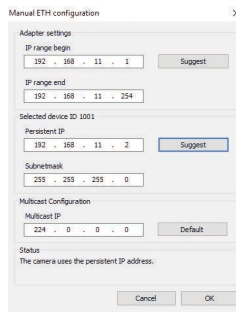


5) Click **Apply changes** and confirm.



6) Click **Manual ETH Configuration**.

7) Click **Suggest** for both the *Adapter settings* and the *Selected device ID*.



8) Verify that the configuration looks something like this:

Adapter Settings:

IP range begin: **192.168.11.1**

IP range end: **192.168.11.254**

Selected device ID:

Persistent IP: **192.168.11.2**

Subnetmask: **255.255.255.0**

The camera should now be available via uEye Cockpit.

9) Start the PULSE LabShop template **Array Fixed Meas.plt** or start **BK Connect Array Analysis**.

10) Once the application has started, select the camera from the drop-down list in the *Camera* window.

Hottinger Brüel & Kjær A/S
www.hbkworld.com · info@hbkworl.com
Local representatives and service organizations worldwide

Although reasonable care has been taken to ensure the information in this document is accurate, nothing herein can be construed to imply representation or warranty as to its accuracy, currency or completeness, nor is it intended to form the basis of any contract. Content is subject to change without notice – contact HBK for the latest version of this document.



BR 8035-17 © Hottinger Brüel & Kjær A/S. All rights reserved.