

# How to Install and Use uEye Cameras

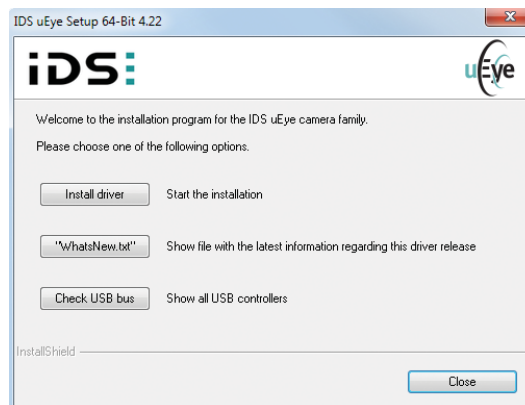
The following uEye® cameras are supported:

- USB: For spherical arrays: **UI122xLE-C**
- USB: For other arrays: **UI324xCP-C** or **UI124xLE-C**
- PoE/LAN: For sliced wheel arrays: **UI524xCP-C**

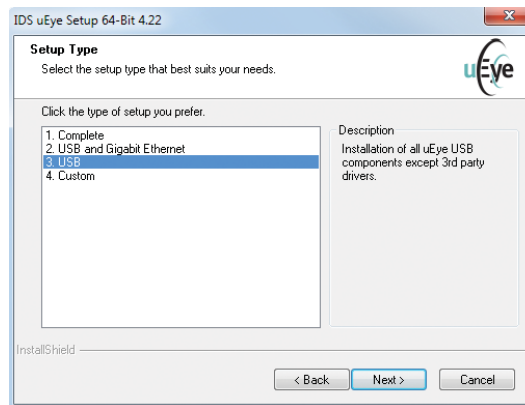
The cameras use the same drivers. However, there are different drivers for 32-bit and for 64-bit operating systems, and for different versions of PULSE™ LabShop and BK Connect®:

- PULSE 18 and 19 require version 4.22
- PULSE 20, 21 and 22 require version 4.70
- BK Connect 2019.0 and PULSE 23 require version 4.9.1

- 1) Copy the zip file containing the drivers from the USB key supplied with the system, or from another device, to the target machine, or download the file from [www.bksv.com](http://www.bksv.com).
- 2) Unzip the file.
- 3) Run the .exe file.
- 4) Select the setup language and click **Next >**.
- 5) Click **Install driver**:



- 6) Select **USB and Gigabit Ethernet** for a PoE/LAN camera or **USB** for a USB camera:



- 7) Click **Next >** and follow the on-screen instructions until the driver is installed.

## USB Cameras

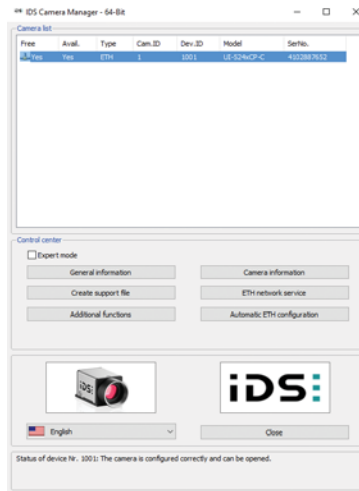
- 1) Plug in the camera and wait until the PC has recognized the device.
- 2) Start the PULSE LabShop template **Array Fixed Meas.plt** or start BK Connect Array Analysis.
- 3) Once the application has started, select the camera from the drop-down list in the *Camera* window.

### Note:

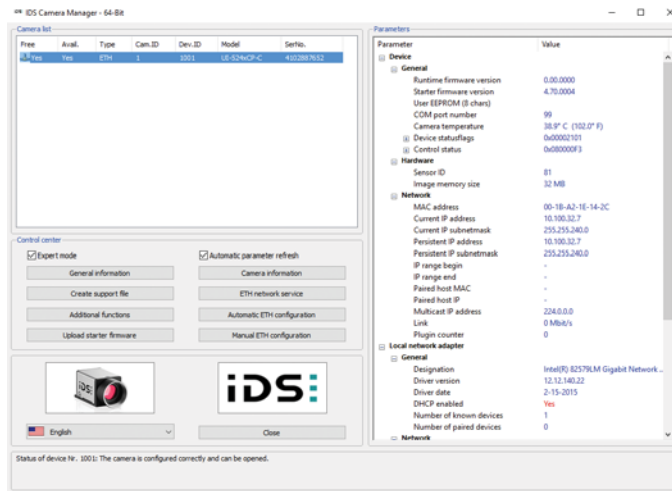
- The camera requires power over USB
- The camera may not work with USB-Ethernet-USB extension cables

# PoE/LAN Camera

1) Open IDS Camera Manager.



2) Check *Expert Mode*.



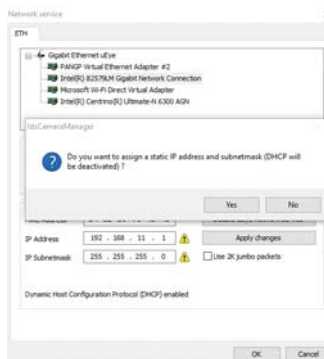
3) Open **ETH network service**.

4) Insert the following information into LAN Network:

IP Address: 192.168.11.1  
IP Subnetmask: 255.255.255.0

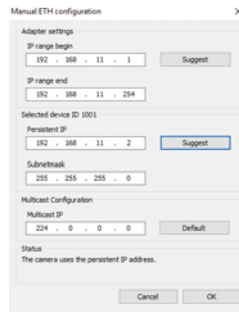


5) Click **Apply changes** and confirm.



6) Click **Manual ETH Configuration**.

- 7) Click **Suggest** under *Adapter settings* and *Selected device ID xxxx*.



- 8) Verify that the configuration looks something like this:

Adapter Settings:  
IP range begin: 192.168.11.1  
IP range end: 192.168.11.254  
Selected device ID xxxx:  
Persistent IP: 192.168.11.2  
Subnetmask: 255.255.255.0

The camera should now be available via uEye Cockpit.

- 9) Start the PULSE LabShop template **Array Fixed Meas.plt** or start BK Connect Array Analysis.  
10) Once the application has started, select the camera from the drop-down list in the *Camera* window.