

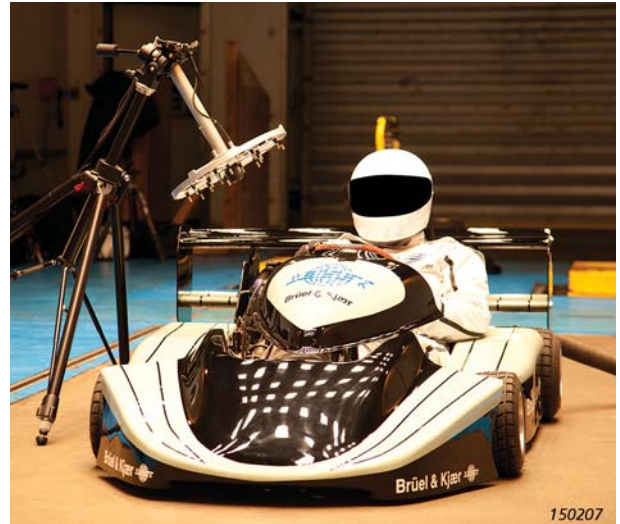
PULSE Array Acoustics, External Plug-in Manager BZ-5652

Uses

- PULSE™ Array Acoustics applications
- Post-processing of stationary sounds
- For use with known data types, for example, sound pressure or sound intensity

Features

- Add your own calculations
- View the results in PULSE displays



Introduction

PULSE Array Acoustics, External Plug-in Manager BZ-5652 builds upon the flexibility and expandability of Brüel & Kjær's PULSE system. It is an optional component of noise source identification (NSI) systems Spherical Beamforming Type 8606, Acoustic Holography Type 8607 and Beamforming Type 8608.

Description

External Plug-in Manager BZ-5652 allows you to create, save, and run your own calculations in the post-processing applications of PULSE Array Acoustics. It is important to note that only stationary calculations are supported.

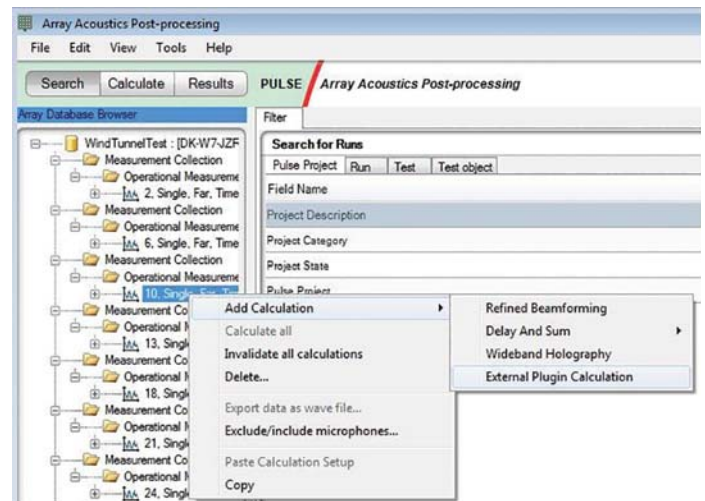
Display results from your calculations using formats available in PULSE Array Acoustics, in any of the values used for the standard plug-in calculations. This allows you to compare results from your calculations and create reports that are tailored to your needs.

Adding a Calculation

It is necessary to know the programming language C# in order to add calculations to External Plug-in Manager BZ-5652.

A software development kit, which includes code samples and databases, is provided to help you get started. The code samples are designed to give you an idea of how data formats can be handled as well as provide you with inspiration for the design and development of your own calculations.

Fig. 1 Add a calculation via BZ-5652



User Manual and Sample Code

To download the [user manual](#) and [sample code](#), visit [bksv.com](#) and navigate to Service, User Support, Downloads. Under Step 1, select PULSE Array Acoustics BZ-5652.

Disclaimer

Adding your own calculation to PULSE Array Acoustics could compromise the performance of the program. Brüel & Kjær takes no responsibility for performance issues related to External Plug-in Manager BZ-5652.

PREREQUISITES

- One of the following:
 - Type 8606-X* : PULSE Array Acoustics Spherical Beamforming
 - Type 8607-X* : PULSE Array Acoustics Acoustic Holography
 - Type 8608-X* : PULSE Array Acoustics Beamforming
- PULSE 7700, 7770 or 7771
- PULSE Acoustic Test Consultant Type 7761
- PULSE Front-end Driver Type 3099-A-X*

* X = the license model, either N: Node Locked or F: Floating

Configuration

OPERATING SYSTEM REQUIREMENTS

Microsoft® Windows® 8 Pro (x64) or Windows® 7 SP1 (x32 and x64)

OTHER SOFTWARE REQUIREMENTS

Microsoft® Office 2007 SP2, Office 2010 SP2 (x32), or Office 2013 (x32)
Microsoft® SQL Server® 2012 (Express SP2, included in installation)
Microsoft® Visual Studio® 2012
Microsoft® .NET® Framework 4.0 or newer

COMPUTER CONFIGURATION/DATA

ACQUISITION FRONT-ENDS

As for PULSE, see Software for PULSE System Data (BU 0229)

Ordering Information†

BZ-5652-X* License for External Plug-in Manager

SOFTWARE MAINTENANCE AND SUPPORT

Available for all software packages. See the PULSE Software Maintenance and Support Agreement Product Data (BP 1800) for further details.

† Ordered via Project Sales

Brüel & Kjær and all other trademarks, service marks, trade names, logos and product names are the property of Brüel & Kjær or a third-party company.

